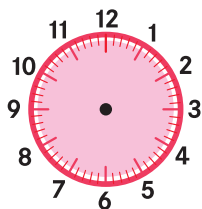
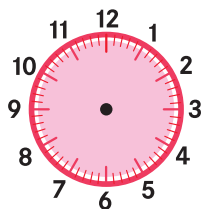


Exercice 14 p. 25

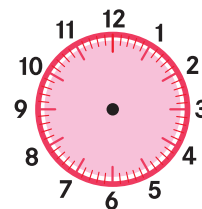
14 Complète en dessinant les aiguilles.



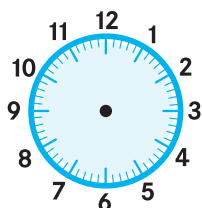
a. Il est 22 heures.



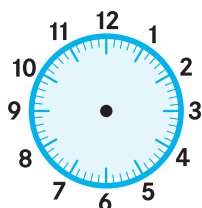
b. Il est 4 heures 20 minutes.



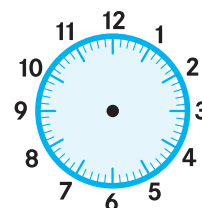
c. Il est 10 heures moins 5 minutes.



d. Il est 3 heures 30 minutes 15 secondes.

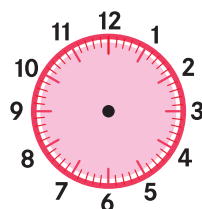


e. Il est 19 heures 45 minutes.

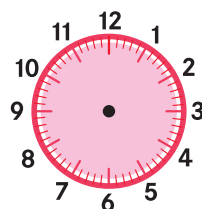


f. Il est 2 heures 45 secondes.

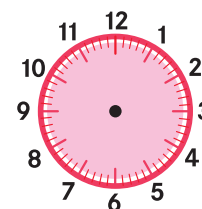
14 Complète en dessinant les aiguilles.



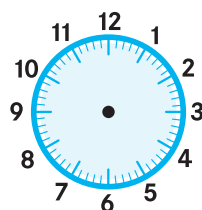
a. Il est 22 heures.



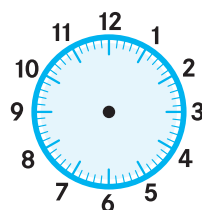
b. Il est 4 heures 20 minutes.



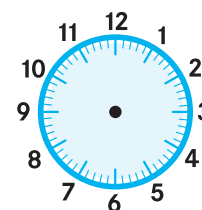
c. Il est 10 heures moins 5 minutes.



d. Il est 3 heures 30 minutes 15 secondes.

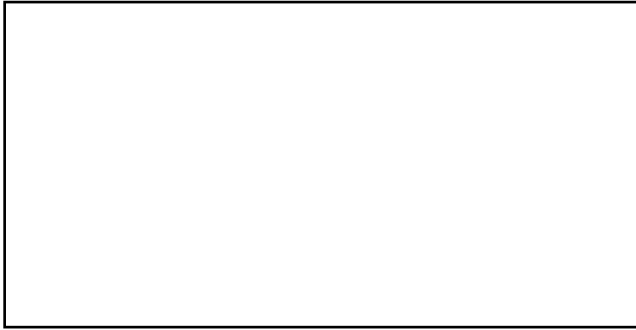


e. Il est 19 heures 45 minutes.

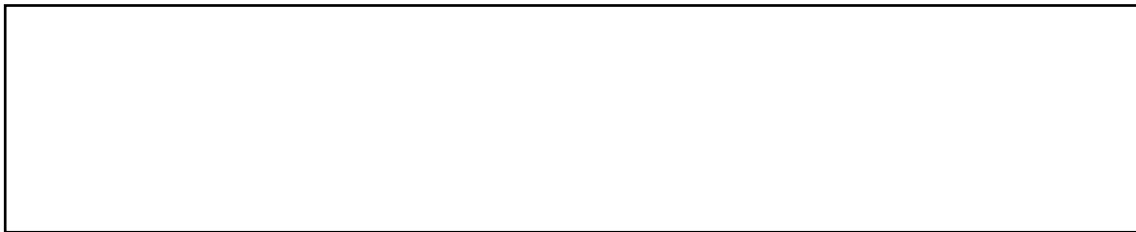


f. Il est 2 heures 45 secondes.

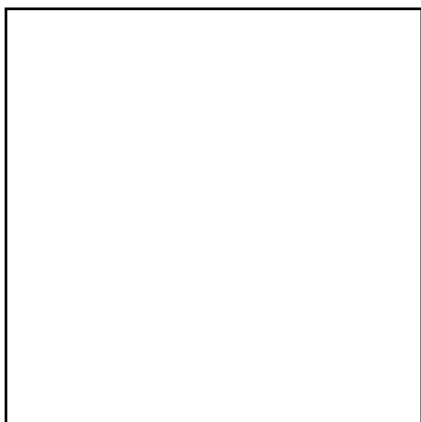
Calque des figures



Exercice 1



Exercice 2



Exercice 3